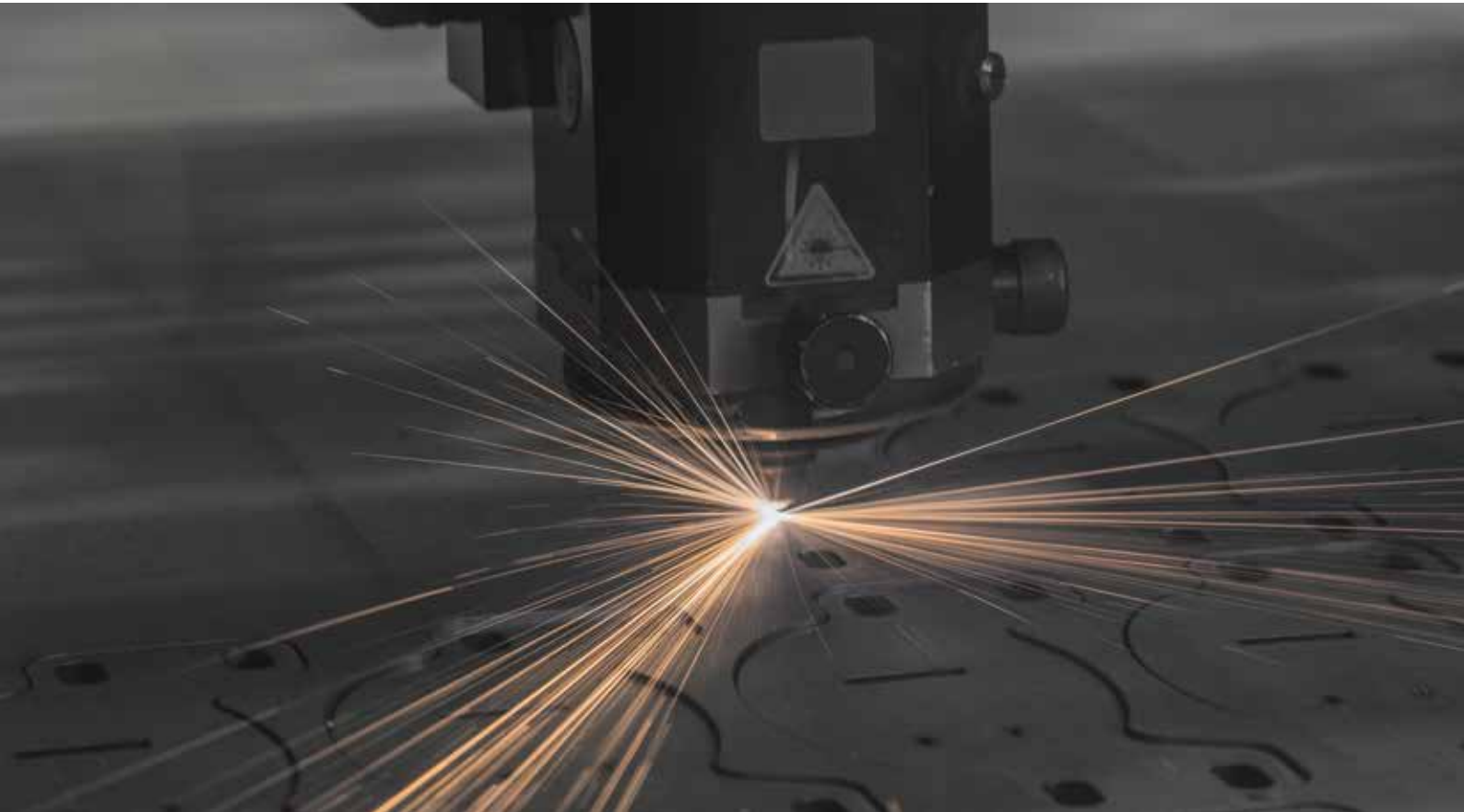
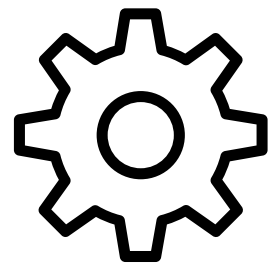


# JALAX



**TUBE- AND  
SHEETMETAL  
PRODUCTS**



HEALTHCARE <<  
OFFICE AND HOME FURNITURE <<  
STORAGE AND LOCKER SYSTEMS <<  
SCHOOL AND METAL FURNITURE <<

## **JALAX AS**

---

Address: Tootmisbaasi, Mündi village,  
Paide parish, 72762 Järvamaa  
Phone: +372 383 8400  
E-mail: [jalax@jalax.ee](mailto:jalax@jalax.ee)  
Homepage: [www.jalax.ee](http://www.jalax.ee)

# OUR COMPANY

---



Jalax is one of the leading producers of metal components and furniture with more than 25 years of an experience in the industry.

Jalax produces metal components and products according to the customer needs as well metal furniture for interior and exterior design.

We continuously invest in modern technologies to improve a quality and an efficiency of the all of our processes and strive for more environmental friendly manufacturing.

In order to offer flexible, on time and fast delivery times, Jalax uses Vendor-Managed Inventory (VMI) system with all our key clients.

Jalax has implemented company's ERP system "Axapta", ISO 9001 Quality management system and ISO 14001 Environment management system.



# FACTS & FIGURES

---



## FACTS

- » Product: Metal components and furniture
- » Established: 1993
- » Factory floor space: 14 000 m<sup>2</sup>
- » Employees: 150
- » Export share: 90%
- » Main Export markets: Finland, Sweden, United Kingdom, Denmark, and Poland

## KEY ADVANTAGES

- » In house capability to perform most sheet and tube processing operations.
- » Internal engineering department for product development and tooling
- » Large welding capacities: 7 welding robots and MIG/MAG/TIG manual welding stations
- » State-of-the-art technology and highly qualified workforce
- » Extensive experience in the industry
- » Environment-friendly manufacturing
- » VMI - Vendor-managed inventory

## ISO 9001 SINCE 2003, ISO 14001 SINCE 2006

Jalax integrated quality and environmental management system has been certified in accordance with the requirements of the international ISO 9001 and ISO 14001 standards. Jalax can present that management system is capable to meet even demanding customers expectations.

# ENGINEERING EXPERIENCE

---

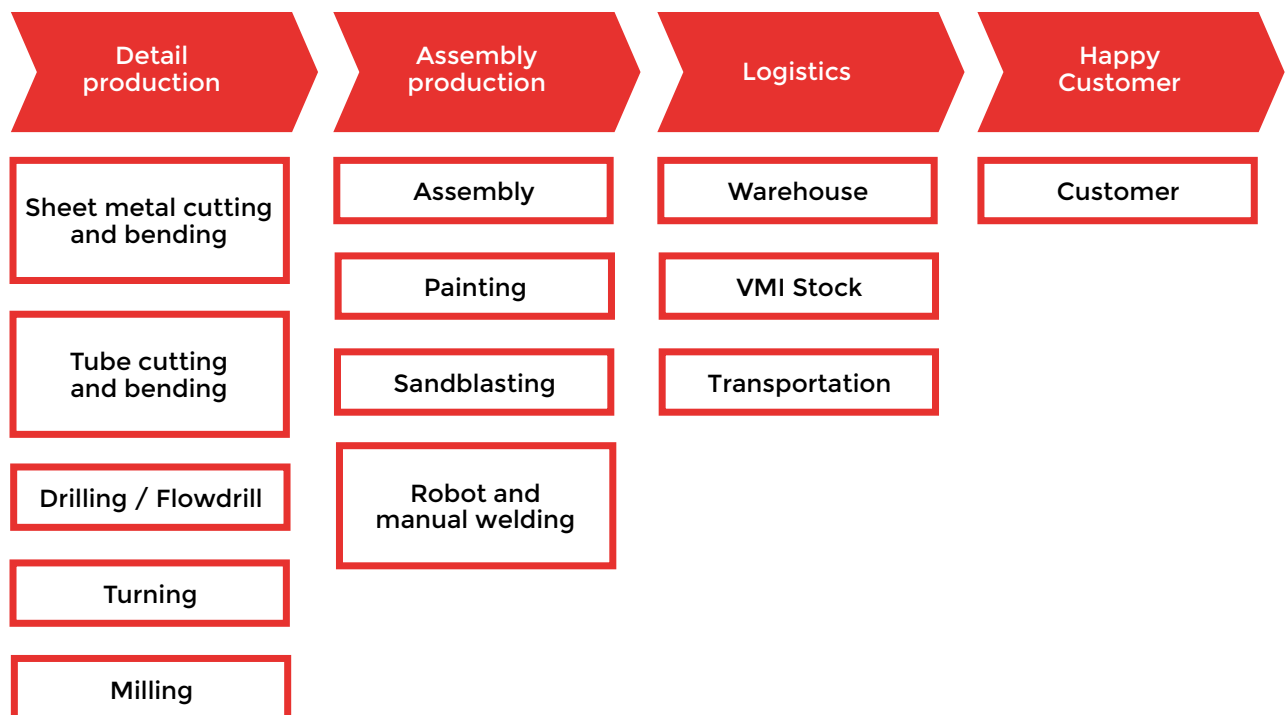
Jalax engineering department is actively involved in our clients product development and our pre-production processes with the aim to offer a high quality product and best cost optimized production.

## KEY ADVANTAGES

- › Experienced engineering team
- › Autodesk Inventor 3D modeling
- › CAD /CAM software
- › Prototype production
- › In-house design and manufacturing of tools and jigs
- › Mass production preparation in early stage.
- › Testing and reporting (PPAP, FMEA, Control Plan and itc.) where needed
- › Cost analysis and tracebilty from ERP

# PRODUCTION FLOW

---



# MACHINERY

---

Trumpf Trulaser 3030



Trumpf Tubematic TLF 2400



Trumpf TC200R



Trumpf TruBend 5130



Crippa 1042E



CMA 3RD-4506



Hartford LG-1000



Doosan Puma 2100 MS



# MACHINERY

---

## Tube processing

- » **Tube laser cutting**  
**Trumpf Tubematic TLF 2400**  
Tube diameter 19-150mm (round and rectangular tubes), max.wall thickness 4mm, max. lenght of processed detail under 3000mm.
- » **Tube bending Crippa 1042E**  
Max. tube diameter d42mm x 2,0mm, lenght of tube 3300mm, max. bending radius R150mm.

## Sheet metal processing

- » **Sheet metal laser cutting**  
**Trumpf Trulaser 3030 Fiber, 6kW**  
Max. plate dimension 3000x1500mm, max. sheet metal max. thickness 25mm mild steel or stainless steel
- » **Sheet metal punching machine**  
**Trumpf TC200R**  
Sheet metal dimensions 2500x1250mm, max. thickness 3mm
- » **Trumpf TruBend 5130**  
Pressure max 130 T, useful bending lenght 3000 mm
- » **Trumpf TrumaBend V85**  
Pressure max 85 T, useful bending lenght 2550 mm
- » **Amada ITPS2 50.12**  
Pressure max 50 T. Useful bending lenght 1250 mm
- » **Sheet metal rolling machine**  
**Biko B4-2014 CNC**

## Metalworking

- » **Turning machine Doosan Puma 2100 MS CNC**  
Max. bar diam. 65 mm. Max turn. length 520 mm
- » **Milling machine Hartford LG-1000 CNC**  
Table size 1150x510 mm. Spindle 10000 rpm
- » **Drilling machine CMA 3RD-4506 CNC**  
Size of work table 4500x580mm, flowdrill capability

## Pre- and aftertreatment of metal

- » **Welding robots Motoman (7pc) MAG**  
Manual welding machines MIG/MAG/TIG
- » **Sandblasting line Giertart**  
Max detail lenght 1800 mm
- » **Powder painting line**  
**Gema Magic Compact**  
CH4 capability, max detail size: 2500x650x2150 mm

## Quality

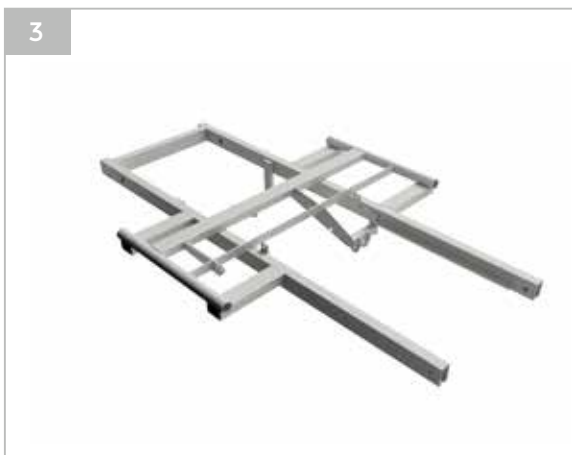
- » **Measuring CMM Arm Faro Platinum 8**



# HEALTHCARE PRODUCTS

---

## Metal bed frames





# HEALTHCARE PRODUCTS

---

## Components for medical equipment

7



8



9



10



11



12

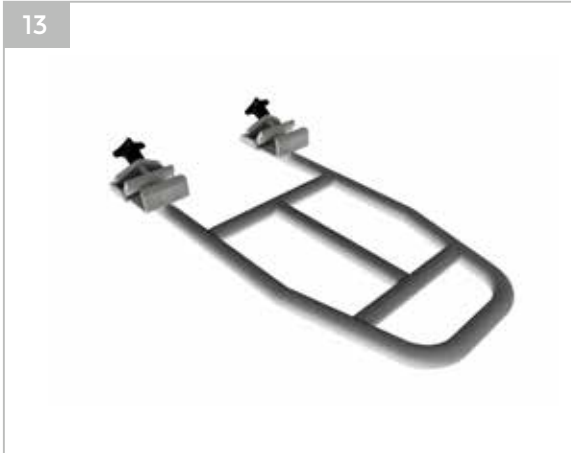


# HEALTHCARE PRODUCTS

---

## Wheelchair assembly parts

13



14



15



16



17



18



# OFFICE AND HOME FURNITURE

---

## Components for tables

19



20



21



22



23



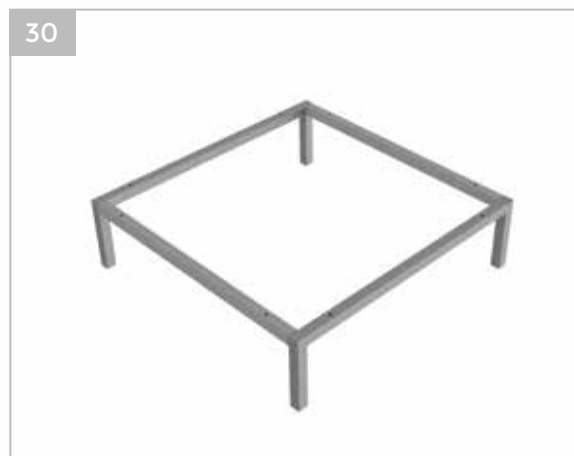
24



# OFFICE AND HOME FURNITURE

---

## Table frames



# OFFICE AND HOME FURNITURE

---

## Table frames



# OFFICE AND HOME FURNITURE

---

## Chair frames

37



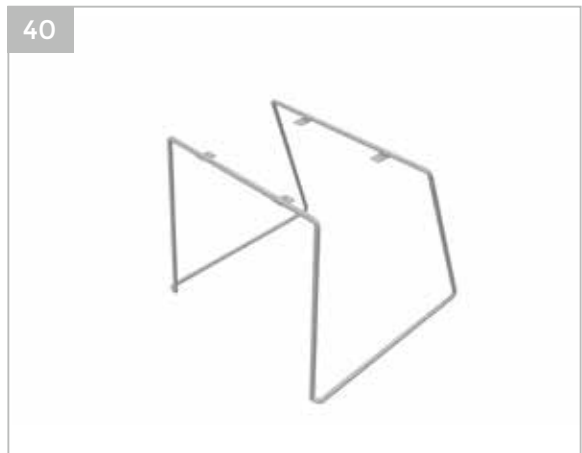
38



39



40



41



42



# OFFICE AND HOME FURNITURE

---

## Chair frames

43



44



45



46



47



48





# TUBE COMPONENTS

---

## Tube laser components



# TUBE COMPONENTS

---

## Tube laser components

55



56



57



58



59



60



# TUBE COMPONENTS

---

## Tube bended components



# SHEET METAL COMPONENTS

## Sheet metal components

67



68



69



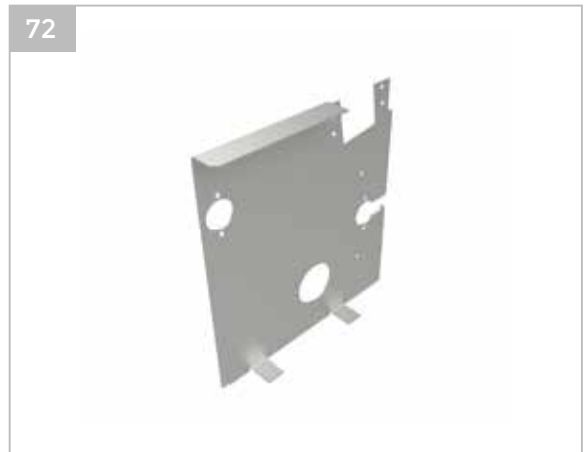
70



71



72



# WELDED COMPONENTS

---

## Welded components

73



74



75



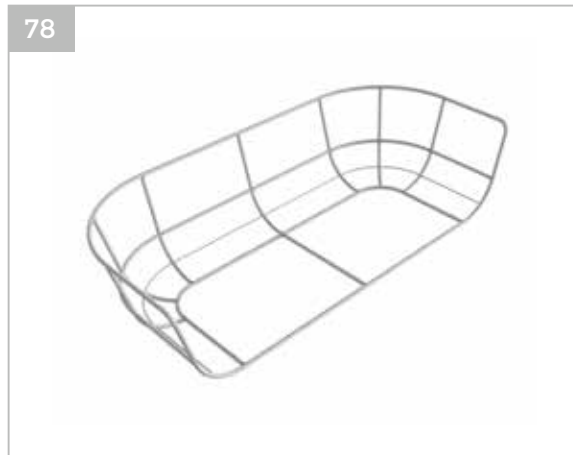
76



77



78



# WELDED COMPONENTS

---

## Welded components

79



80



81



82



83



84



# LOCKERS AND STORAGES

---

## Lockers and storages

85



86



87



88



89



90





# LOCKERS AND STORAGES

---

## Lockers and storages



# SHELVES

---

## Shelves

97



98



99



100



101



102



# SCHOOL FURNITURE

---

## School furniture “Malle”

103



104



105



106



107



108



# SCHOOL FURNITURE

---

## School furniture

109



110



111



112

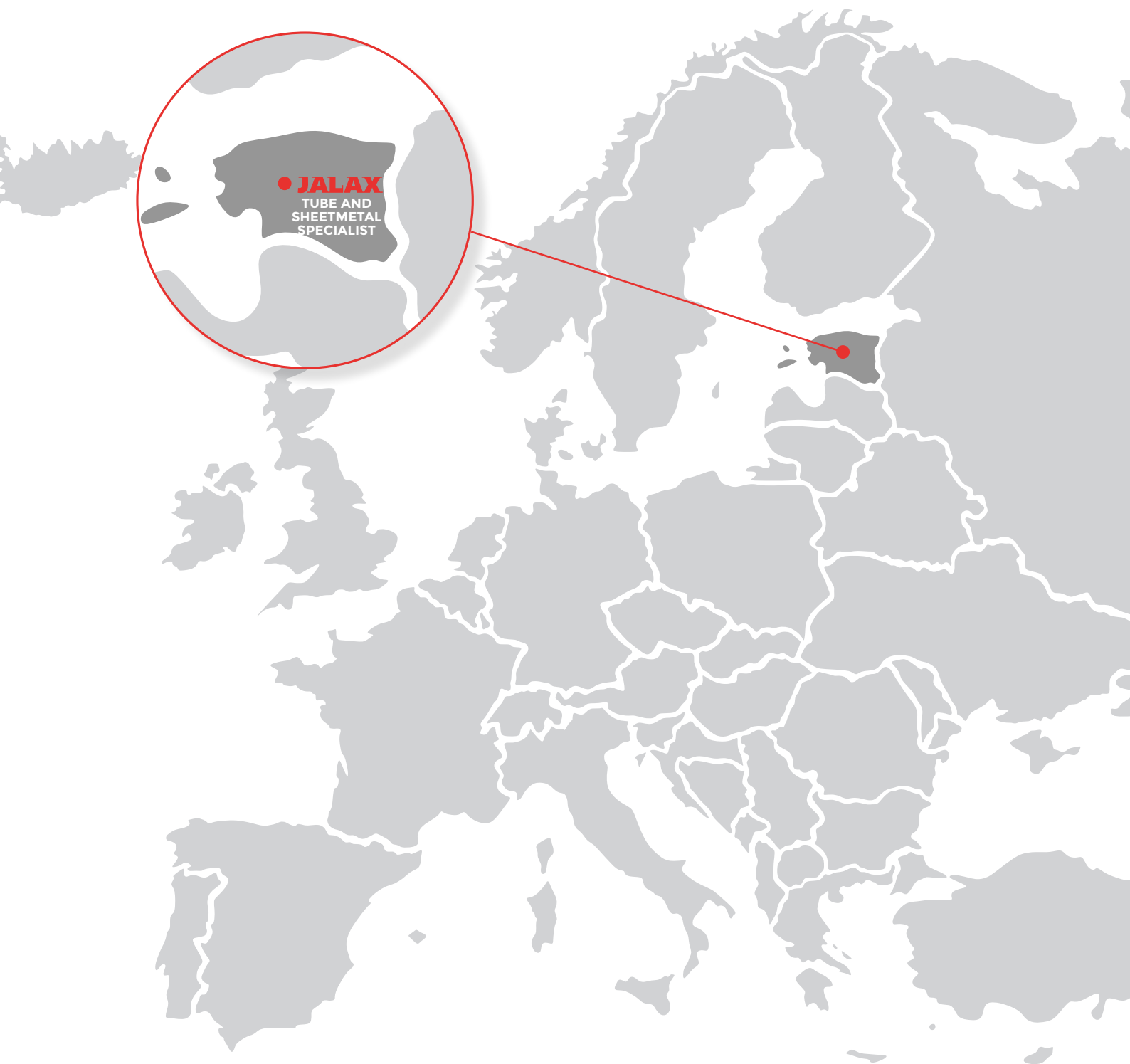


113



114





## JALAX AS

---

Address: Tootmisbaasi, Mündi village,  
Paide parish, 72762 Järvamaa  
Phone: +372 383 8400  
E-mail: [jalax@jalax.ee](mailto:jalax@jalax.ee)  
Homepage: [www.jalax.ee](http://www.jalax.ee)



Euroopa Liit  
Euroopa  
Regionaalarengu Fond



Eesti  
tuleviku heaks